

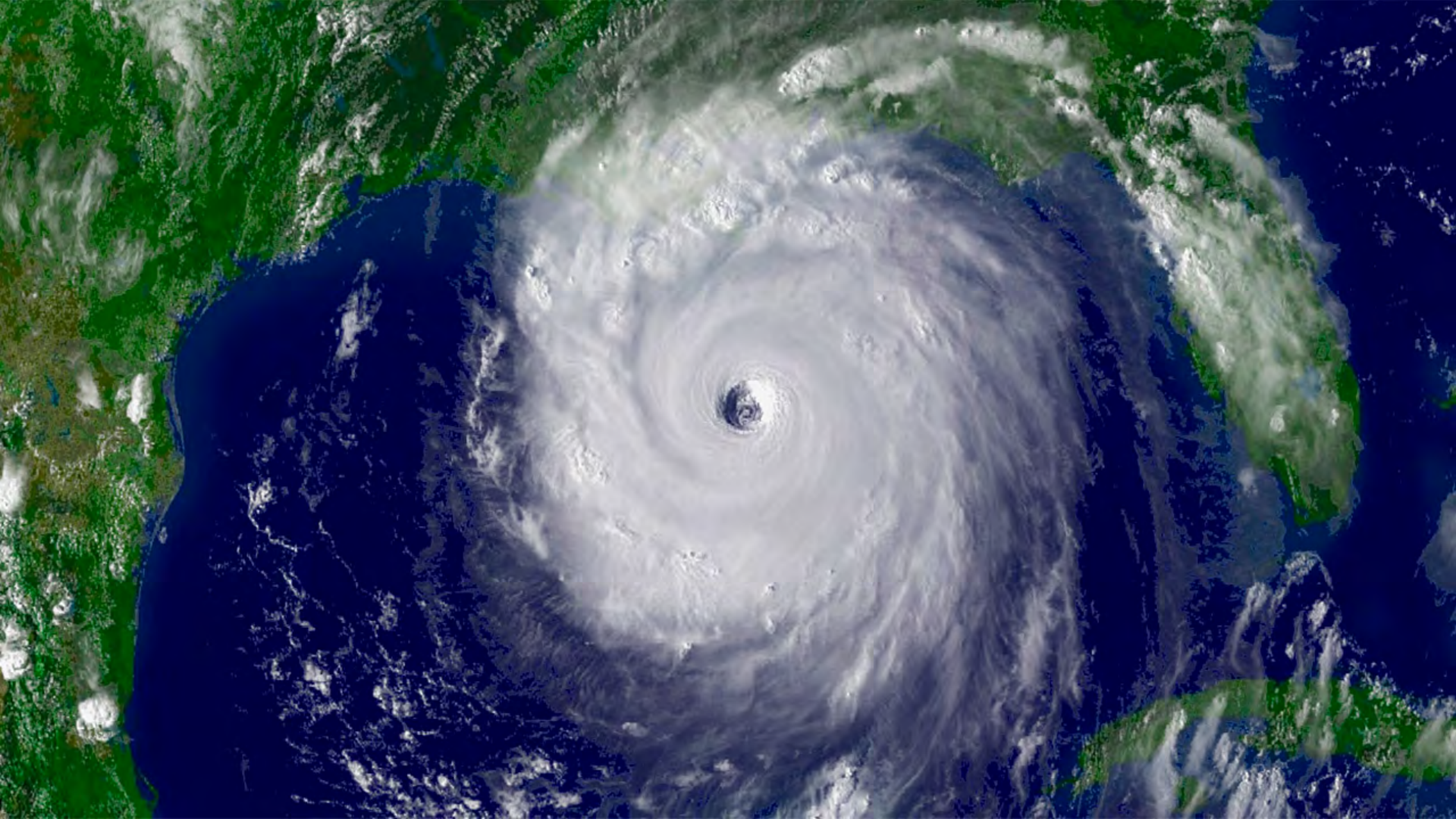
'17 Houston Economic Outlook

Patrick Jankowski



GREATER HOUSTON
PARTNERSHIP

Making Houston Greater.





Sector	Jobs Lost Dec'14 – Nov '16	%
Exploration & Production	-5,400	-9.9%
Oil Field Services	-19,800	-35.4
Fabricated Metal Products	-12,500	-18.9
Equipment Manufacturing	-18,500	-35.6
Engineering	-11,300	-14.8
Total Losses	-67,500	-21.5%

Source: Texas Workforce Commission



Sector	Jobs Lost Dec'14 – Oct '16	%
Wholesale Trade	-4,400	-3.1%
Transportation Services	-6,100	-4.3
Employment Services	-9,700	-11.5
Total Losses	-21,200	-5.3%

Source: Texas Workforce Commission



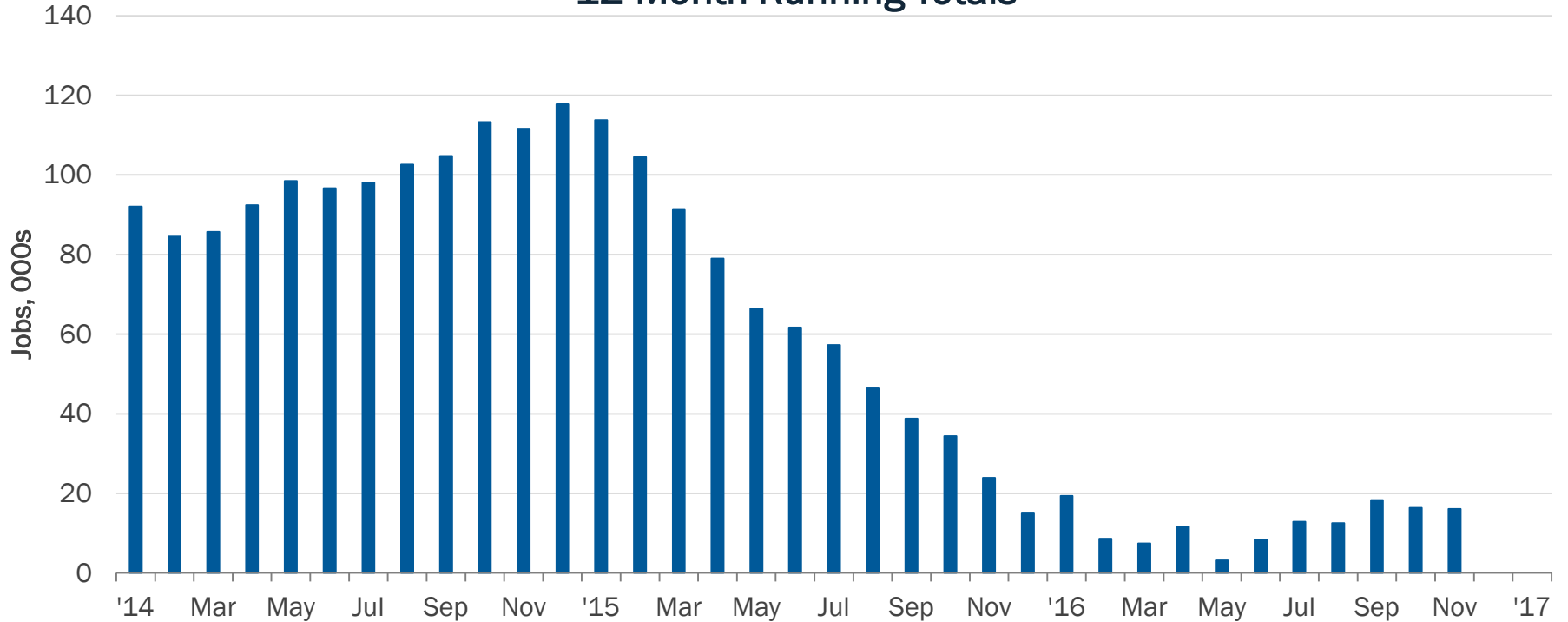
Dry Side of the Storm

Sector	Jobs Gained Dec '14 – Oct '16	%
Hotels, Restaurants, Bars	+27,600	+10.7%
Health Care	24,500	8.0
Public Education	11,200	5.6
Retail Trade	7,100	2.3
Services to Buildings	7,000	14.6
Total Gains	+77,400	+6.9%

Source: Texas Workforce Commission

Houston Employment, Net Change

12-Month Running Totals



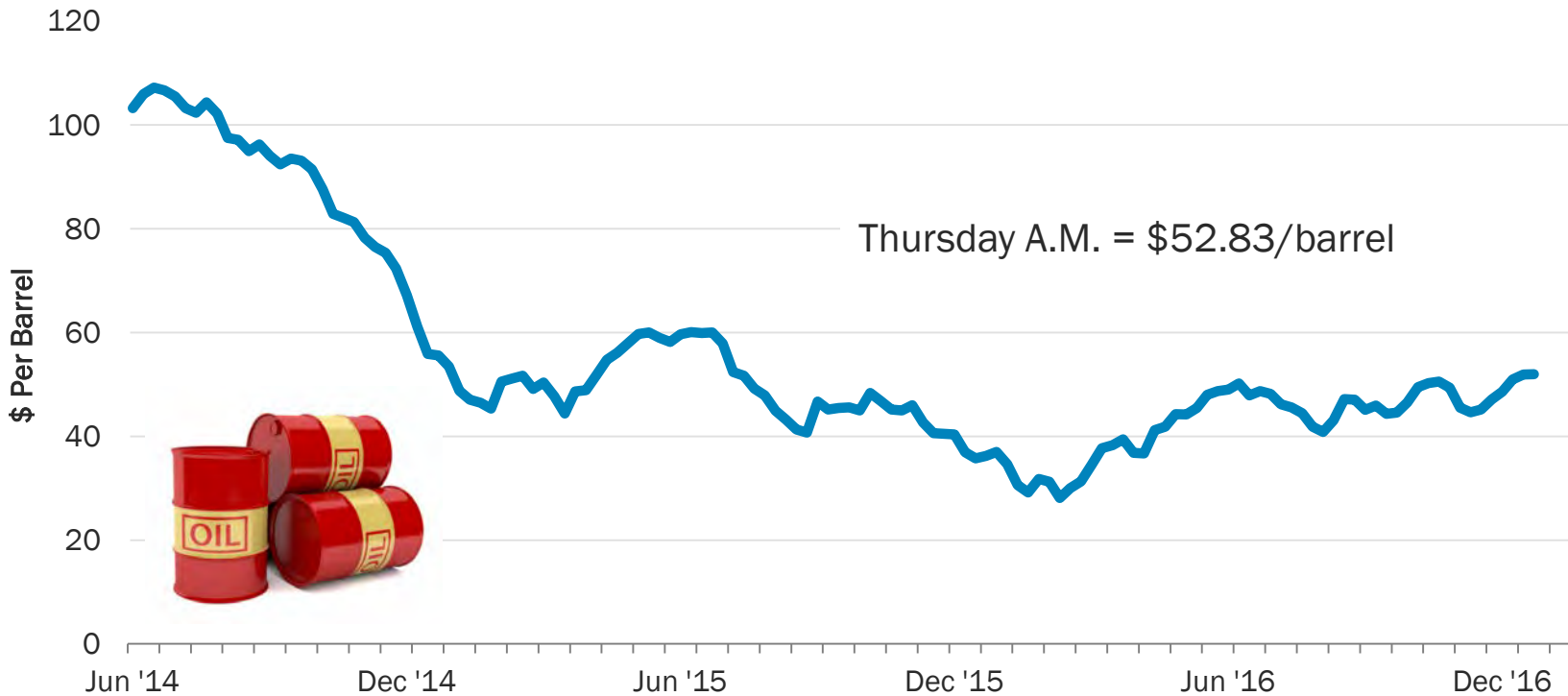
Source: Texas Workforce Commission



“Hurricane Oil” is now
in the rearview mirror.



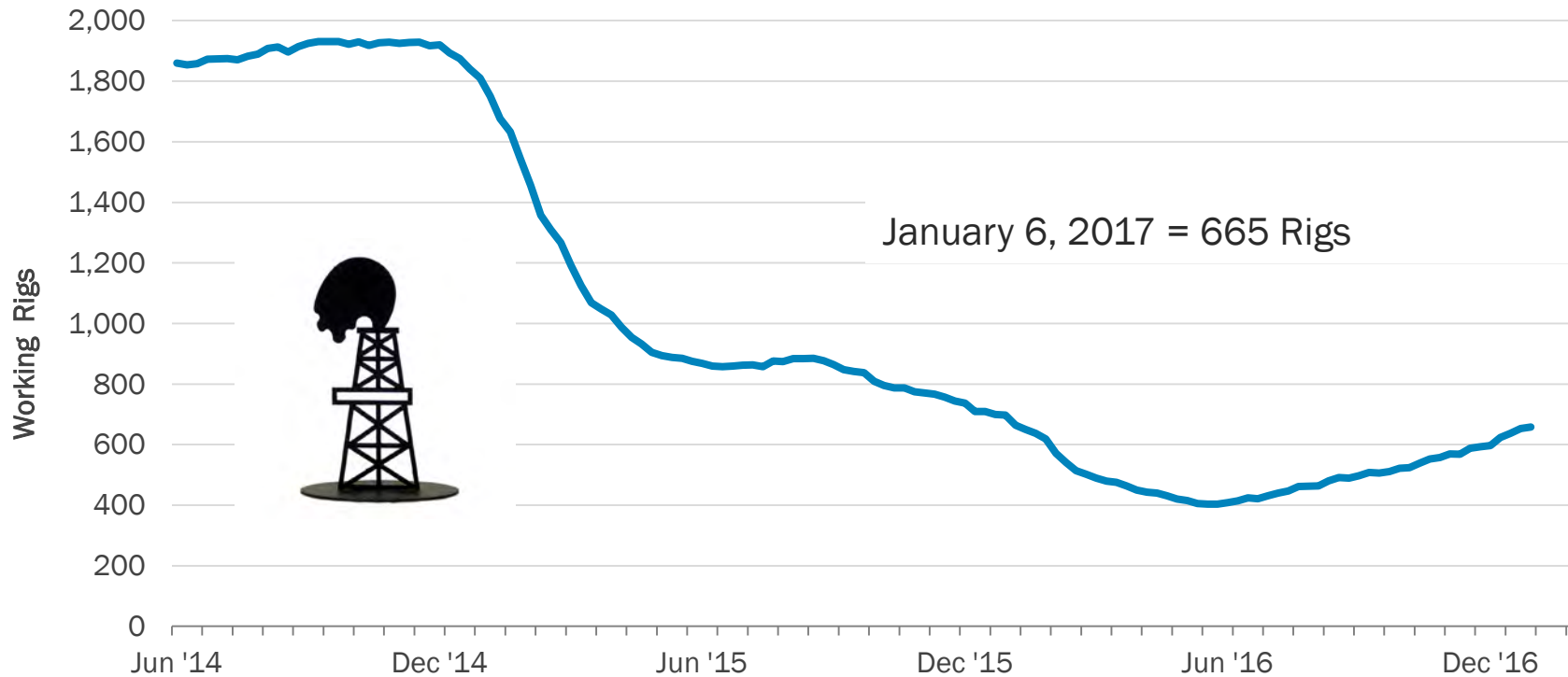
NYMEX WTI Spot Price



Source: U.S. Energy Information Administration

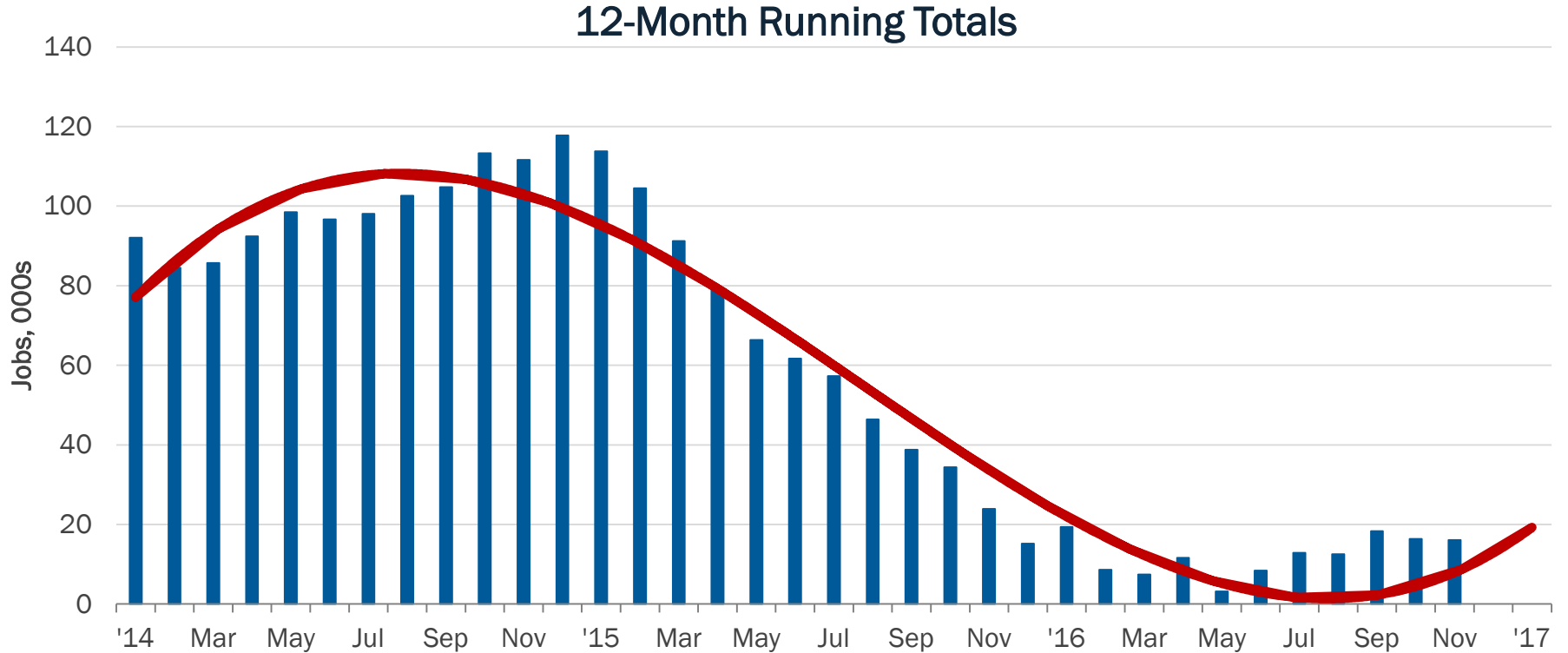


U.S. Rig Count



Source: Baker Hughes

Houston Employment, Net Change

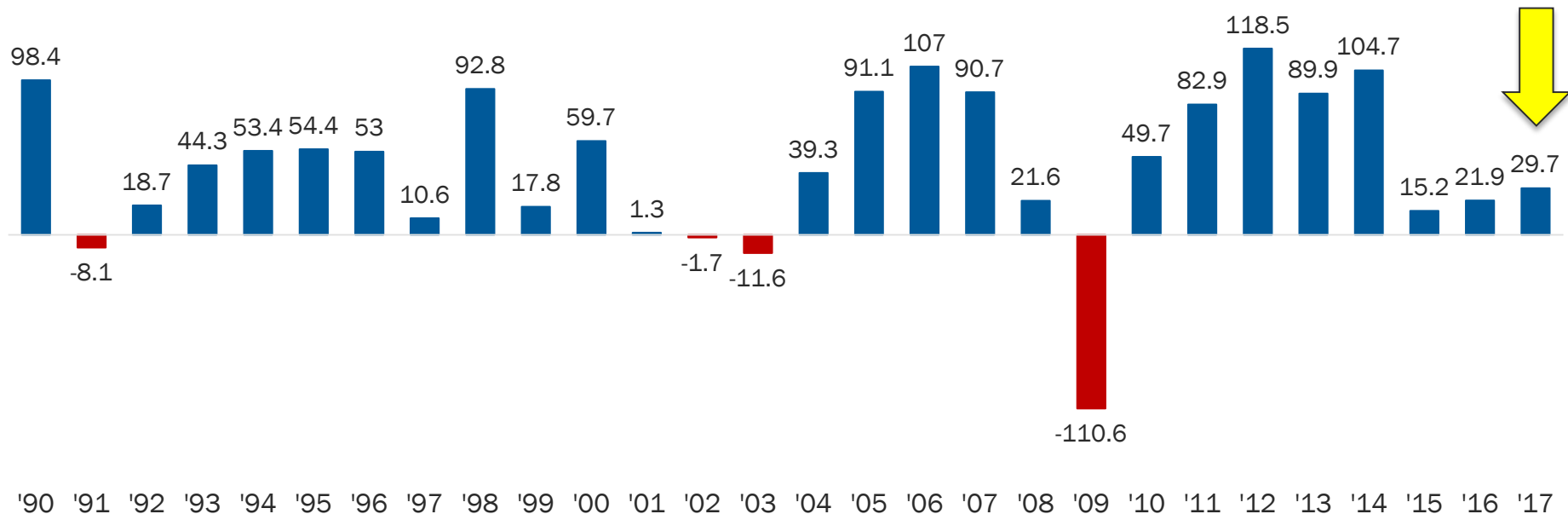


Source: Texas Workforce Commission



Historic Job Growth

December to December, (000s)



'17 Houston Economic Outlook

Patrick Jankowski



GREATER HOUSTON
PARTNERSHIP

Making Houston Greater.